



# The Nansemond

3 Bedrooms | 3 Baths | 2,429 Sq. Ft.

Thoughtfully crafted, The Nansemond is an expansive modern three bedroom home with front porch, covered patio/optional sunroom, ample storage space, and second floor loft. Open and light-filled, the first floor offers a living/dining space that is ready for entertaining, office space adjacent to the grand kitchen, and a Master Suite with garden tub perfect for soaking.

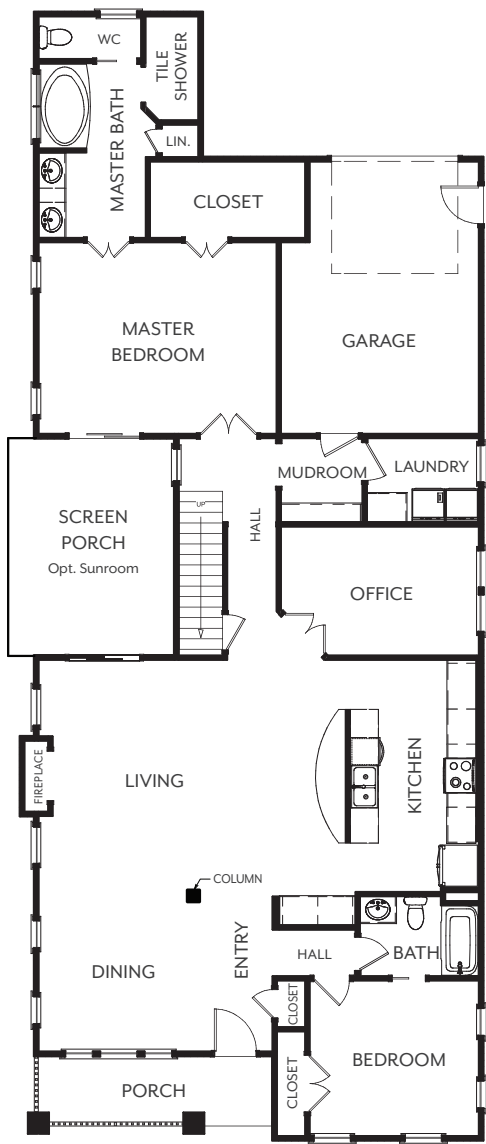
Craftsman Elevation



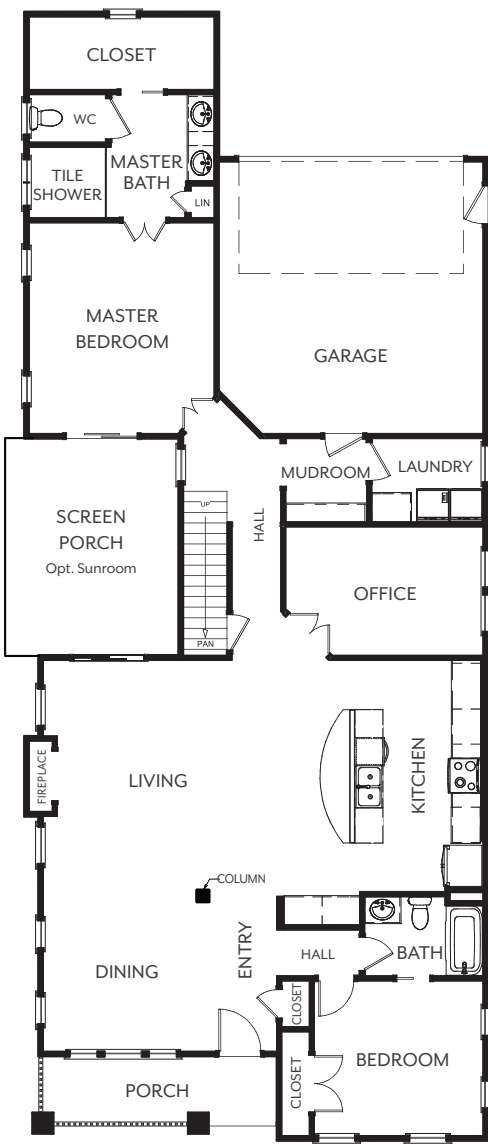
Cottage Elevation



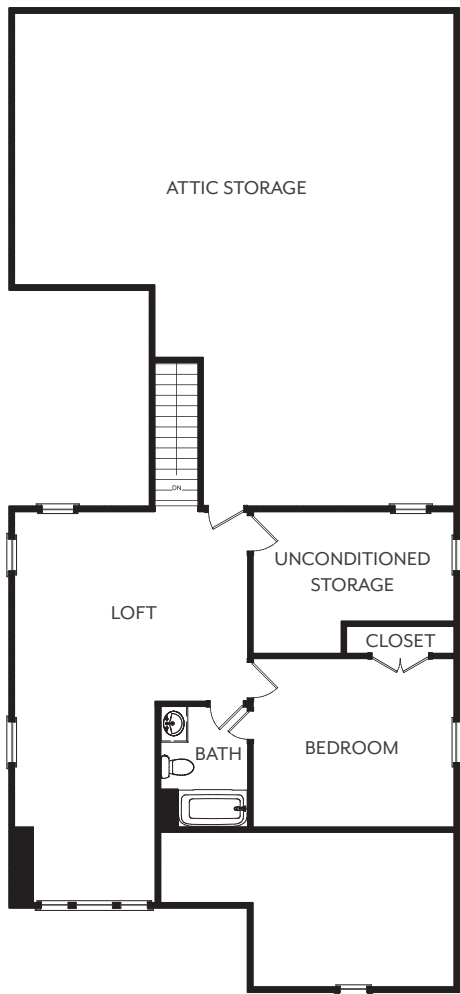
Traditional Elevation



First Floor



First Floor  
with 2-Car Garage Option



Second Floor



[LandingsBennettsCreek@RoseAndWomble.com](mailto:LandingsBennettsCreek@RoseAndWomble.com)

Christopher Kait Construction | Builder reserves the right to change prices, plans, components and specifications without notice. All illustrations are conceptual and accuracy is not guaranteed. Square foot dimensions are approximate. Revised on 08/06/2020.

